

## Staff Login Guide



### LOGGING INTO THE BOOKNOOK DASHBOARD

*Click the Table of Contents below to jump to the instructions for the assigned login type at your site:*

- **Manual Login...page 2**
- **Clever Login...page 3**
- **ClassLink Login...page 4**

*Please note: Staff BookNook accounts are provided at the discretion of site leadership. If you do not have an account and would like to request one, contact your site leader, who will coordinate with your BookNook Program Delivery team to set it up.*

*Login information is the same for all device types*

## Logging into your BookNook Dashboard

- Use a computer, laptop, iPad, or Chromebook to log in to your BookNook Dashboard.
- Use a supported web browser such as Google Chrome, Safari, or Microsoft Edge. Google Chrome is our recommended web browser.



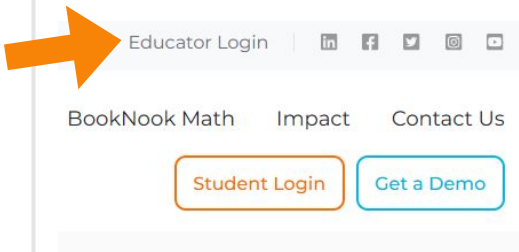
**Tip: Bookmark or add a shortcut to the Educator Login Page for future use:**

<https://app.booknooklearning.com/tutor/login>

## STAFF

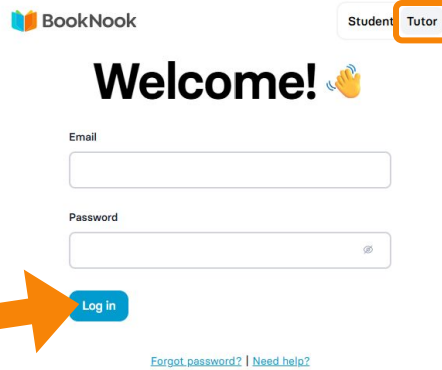
1

Go to [booknook.com](https://booknook.com) using a supported browser window, and click on **Educator Login** at the top.



2

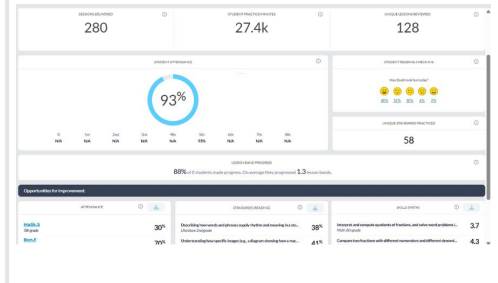
Enter your email and password. Click Log in.



*Note: On the Educator Login Page, **Tutor** refers to any staff member with a BookNook account logging into BookNook*

3

Once logged in, you will see the BookNook Dashboard.



*Learn more about the BookNook Dashboard and the information available [here](#)*



## Forgot your Password?

Visit the [Educator Login Page](#) and select “Forgot password?” at the bottom. Enter the email associated with your BookNook account and select **Send Instructions**. Check your inbox for an automated email from [donotreply@booknook.com](mailto:donotreply@booknook.com) containing the instructions and a link to reset your password. *Need additional support? Contact [BookNook Customer Care](#).*

## Logging into your BookNook Dashboard

- Use a computer, laptop, iPad, or Chromebook to log in to your BookNook Dashboard.
- Use a supported web browser such as Google Chrome, Safari, or Microsoft Edge. Google Chrome is our recommended web browser.



If your site is using Clever and BookNook integration, there are no BookNook passwords or usernames to remember!

## STAFF

1

You will access BookNook through **Clever**. Go to your district or school's Clever portal.

# Clever

*This is usually linked on your district site or LMS, or at [clever.com/login](https://clever.com/login) by searching your district or school name.*

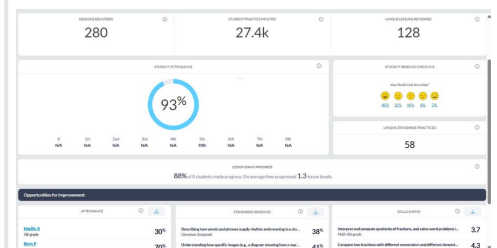
2

Once logged in to Clever, click on the **BookNook logo** in the Clever portal.



3

Once logged in, you will see the BookNook Dashboard.



*Learn more about the BookNook Dashboard and the information available [here](#)*



## Need Help?

If you are having issues with your Clever account, be sure to contact the Clever administrator or leadership at your site.

*Need additional support? Contact [BookNook Customer Care](#)*

## Logging into your BookNook Dashboard

- Use a computer, laptop, iPad, or Chromebook to log in to your BookNook Dashboard.
- Use a supported web browser such as Google Chrome, Safari, or Microsoft Edge. Google Chrome is our recommended web browser.



If your site is using ClassLink and BookNook integration, there are no BookNook passwords or usernames to remember!

## STAFF

1

You will access BookNook through **ClassLink**. Go to your district or school's ClassLink portal or LaunchPad.



This is usually linked on your district site or LMS, or can be accessed at [launchpad.classlink.com/login](https://launchpad.classlink.com/login)

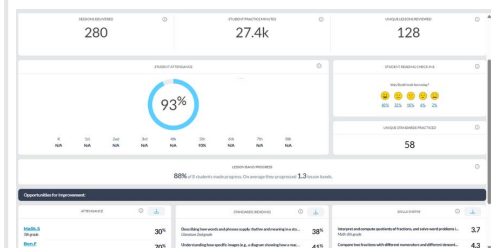
2

Once logged in to ClassLink, click on the **BookNook logo** in the ClassLink portal.



3

Once logged in, you will see the BookNook Dashboard.



Learn more about the BookNook Dashboard and the information available [here](#)



## Need Help?

If you are having issues with your ClassLink account, be sure to contact the ClassLink administrator or leadership at your site.

Need additional support? Contact [BookNook Customer Care](#)